

Image 1

Florence FULLER (Australia, b.1867, d.1946)

Sand pies, 1893 (detail)

oil on academy board

State Art Collection, Art Gallery of Western Australia

Purchased 1904

Image 2

Frederick McCUBBIN (Australia, b.1855, d.1917)

Down on his luck, 1889 (detail)

oil on canvas

State Art Collection, Art Gallery of Western Australia

Purchased 1896

Image 3

John RUSSELL (Australia, b.1858, d.1930)

Les Aiguilles de Belle-Ile, c1890 (detail)

oil on canvas

State Art Collection, Art Gallery of Western Australia

Purchased with funds from the Great Australian

Paintings Appeal, 1984

Image 4

Hans HEYSEN (Australia, b.1877, d.1968)

Driving into the light, 1914-1921

oil on canvas

State Art Collection, Art Gallery of Western Australia

Gift of Mr W H Vincent, 1922



Children's Discovery Sheet – *Your Collection 1800 to 1920*



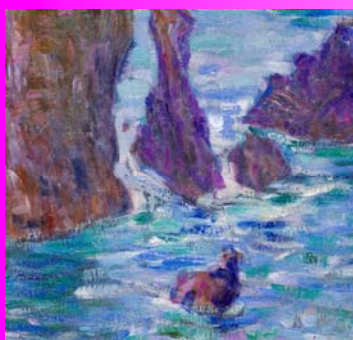
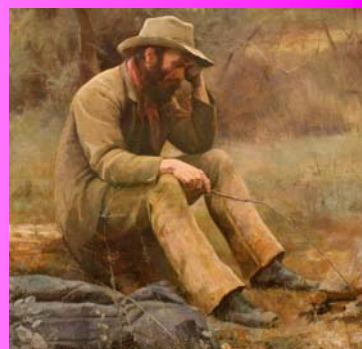
At the Beach

Florence Fuller's painting shows a child playing at the beach.

Can you find this small painting?
What is the young girl doing?

Once a Jolly Swagman...

Find the painting by Frederick McCubbin that shows a lone swagman.
What do you think has happened to this man?
How is he feeling?
How can you tell?



An Australian Impressionist

John Russell was an Australian painter who painted in France with some of the Impressionists. Find his seascape with a French title *Les Aiguilles de Belle-Ile*.

How many different blues and greens has he used in the brushstrokes to paint the sea?
What do you notice about the colour of the rocks?

Rural Life

This large work is a painting about life on the land. What time of the day is it? Can you find clues in the painting that tell you this?
Imagine you are the drover on the horse. How do you feel? What can you hear, smell and taste?

