



Art Gallery
of Western Australia



preview 09

July • August • September • October

Foreword

Welcome to winter at the Gallery, where we are highlighting the works of Australian contemporary artists. We have the carefully crafted objects of David Walker and Mari Funaki on display, and the work of local, renowned photographer Richard Woldendorp. Alongside these we're pleased to be hosting the second *Western Australian Indigenous Art Awards* exhibition.

Many of you will have heard that the Gallery will be closing for one day a week. In order to help achieve the three per cent efficiency dividend requested by the Government, and in a time of rapidly escalating costs, it was decided that closing for a day a week was the best way for us to maintain the quality of exhibitions and accompanying programs. This closure is in line with many other cultural institutions overseas. After careful consideration Tuesday was chosen as the Gallery's quietest day and therefore the day which would least inconvenience our audience. This public-free day is also beneficial for the working life of the Gallery, as staff will be able to accomplish tasks, such as major artwork installation and collection care, which they struggle to do while the Gallery is open. The first Tuesday on which the Gallery will be shut is 7 July, but please do continue to visit us on the other six days of the week.

Looking ahead, I am delighted to announce that this coming summer the Gallery will be presenting *McCubbin: Last Impressions 1907–17*. Frederick McCubbin is one of the foremost Australian Impressionists, most well known for his images of the bush. Two works from the State Art Collection, *The Old Garden* and *Self portrait*, are featured in the exhibition. It will be a great surprise for audiences as McCubbin continued to experiment with artistic techniques right up until his death, producing wonderful colour and light-filled visions of his surroundings. Opening mid-December, the exhibition includes a diverse range of joyous Australian paintings.

Stefano Carboni, Director

Year 12 Perspectives 2008

Until 19 July 2009

Year 12 Perspectives encourages those students whose work has been selected for the exhibition to continue with their artistic and creative development into the future. The International Foundation for Arts and Culture (IFAC) sponsors two *Year 12 Perspective* grants – the *IFAC Arts Grants*. The first contributes \$5000 towards the purchase of equipment or research or study to further individual creative learning and development. The *IFAC Travel Grant* awards \$5000 to enable a student to travel to Japan to facilitate study in a particular area of interest such as design, fashion or architecture. This year the travel grant recipient, Edan Smith Kidd, with her work *Sweet Sorrow 2008*, will also have her work included as part of the selected *Year 12 Perspectives* Western Australian touring pieces. These touring works will be exhibited alongside student works from around the globe as part of the IFAC International School Arts exhibition to be held in Tokyo in July.



Arts Grant Winner

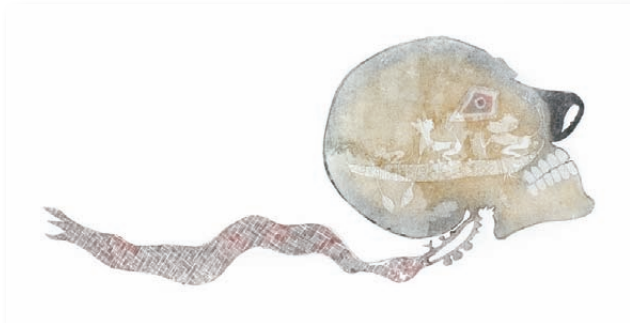
Natasha Adamson

Aranmore Catholic College TEE Art and Design

Moment of introspection 2008

etching and wheelwork on glass

15 x 19 x 19cm



Dennis Nona

Kuik 2008

etching on Hahnemuhle paper

19 x 43cm (image)

Courtesy the artist and The Australian Art Print Network

© the artist and The Australian Art Print Network

Western Australian Indigenous Art Awards 2009

25 July – 15 November 2009

The finalists for the *Western Australian Indigenous Art Awards 2009* represent artists from across the continent working in a dynamic range of media, including sculpture, painting and photography. This year the exhibition incorporates eight Western Australian artists and eight more from across Australia. Many artists working predominantly in sculptural forms are featured – including the traditional Dari and mask-making skills of Ricardo Idagi, the incredibly lush Morning Star Pole of Gali Yalkarriwuy Gurruwiwi and the monumental rusted forms of Lorraine Connelly-Northey. The exhibition will also include majestic paintings and insightful photographic works, which will again make the *Western Australian Indigenous Art Awards* a unique and unforgettable experience not to be missed.



The artists selected for the awards exhibition are:

Tony Albert (born 1981 Townsville QLD)

Lorraine Connelly-Northey (born 1962 Swan Hill VIC)

Timothy Cook (born 1958 Goose Creek Milikapiti NT)

Nici Cumpston (born 1963 Adelaide SA)

Gali Yalkarriwuy Gurruwiwi (born c1942 Milingimbi NT)

Ricardo Idagi (born 1957 Thursday Island Torres Strait)

Brian McKinnon (born 1957 Geraldton WA)

Doreen Reid Nakamarra (born c1955 Warburton WA)

Yinarupa Nangala (born c 1961 Kiwirrkura region WA)

Dennis Nona (born 1973 Badu Island Torres Strait)

Tiger Palpatja (born c1920 place unknown)

Christopher Pease (born 1969 Perth WA)

Shane Pickett (born 1957 Quairading [Balladong Country] WA)

Wakartu Cory Surprise (born 1929 Great Sandy Desert WA)

Daniel Walbidi (born 1983 Broome WA)

Women's Collaborative (Tjuntjuntjara community WA)

The awards and exhibition are supported by the Government of Western Australia through the Department of Culture and the Arts.

Public Programs

Please check our website for details: artgallery.wa.gov.au



left

Wakartu Cory Surprise

Manabularnbularn Warla 2009

Atelier acrylic on canvas

90 x 120cm

Courtesy the artist and Mangkaja

Arts Resource Agency

© Wakartu Cory Surprise

above

Timothy Cook

Kulama 2008

natural ochre on canvas

120 x 190cm

Courtesy the artist and Jilamara Arts &

Crafts in association with Seva Frangos Art

© Timothy Cook



Richard Woldendorp

Top of Curtis Island, Cape Capricorn, north-east of Gladstone, Queensland 1997

Lambda digital print

105 x 140cm

© Richard Woldendorp

Abstract Earth: The Photography of Richard Woldendorp

1 August – 8 November 2009

For the last 50 years, Richard Woldendorp has been depicting the Australian landscape from a unique perspective – the sky. From his aerial vantage point he has photographed, with great skill and precision, shifting tides, moving sands, the reflective waterways, roads, farmed regions, forests and more. Seen together, these powerful images reveal the incredible beauty and diversity of this country. As such, Woldendorp has created a unique and important body of work that challenges how we experience and understand our place within the Australian landscape. By opening up this exchange, his photographs also provide space for a meditation on the critical relationship between the human and natural worlds as we shape ourselves in dynamic concert.

Abstract Earth is curated by John McDonald and R. Ian Lloyd.

Public Programs

Sunday 2 August at 2pm

Floor Talk: John McDonald and R. Ian Lloyd

FREE

Sunday 9 August at 2pm

Artist Talk: Richard Woldendorp floor talk

FREE



Richard Woldendorp

Sand dune, Windorah, Queensland, Australia 1994

Lambda digital print

75 x 100cm

© Richard Woldendorp



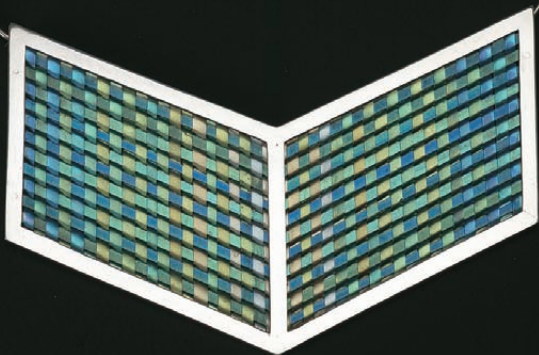
Richard Woldendorp

Irrigated rice growing area at Mareeba, inland from Cairns, northern Queensland, Australia 1989

Lambda digital print

100 x 75cm

© Richard Woldendorp



David Walker

Pendant 1980

925 silver, titanium

19.0 x 15.0 x 0.4cm

Collection of the Artist

© David Walker

David Walker: Anatomy of the object

Until 18 October 2009

David Walker is one of Western Australia's most accomplished and influential designers and craftspeople. Initially trained in silversmithing, ceramics and industrial design in Manchester, England, Walker turned to jewellery making after arriving in Perth in 1964, and made an immediate and enduring impact on the local, and later national and international craft and design field as artist, craftsman, educator and mentor.

David Walker: Anatomy of the object examines Walker's fascination with structure, and how it is created, and his search for a form of personal expression that speaks of the physical and emotional worlds in which we are irretrievably immersed. The exhibition responds to the artist's achievements to date by presenting selected works from 1961 to the present day, and includes works from the State Art Collection, private lenders and public institutions, as well as the artist's personal collection.

Public Programs

Sunday 26 July at 2pm

Artist Talk: David Walker

FREE

Saturday 1 August, 10am-4pm

David Walker Jewellery Workshop 2

Cost \$35, bookings essential. Call 9492 6640 or

email: public.programs@artgallery.wa.gov.au



Mari Funaki
Ring 2005
20k gold
2.2 x 2.4 x 1.1cm
Collection: Mari Funaki
© Mari Funaki

Mari Funaki, works 1992 – 2009

Until 18 October 2009

Based in Melbourne, Mari Funaki is one of the country's most important jewellers. This exhibition celebrates Funaki's considerable achievements between 1992 and the present day, focussing on containers, objects, rings and bracelets. Crisp and rather formal in nature, her small-scale (often wearable) sculpture has an intense imaginative power that circles around the idea of the enigma. There is a profound darkness to her works as they appear animal and architecture-like, in the process of continual transformation. This will be the first time such a large array of works by Funaki has been seen in Western Australia.

Public Programs

Please check our website for details: artgallery.wa.gov.au

Helen Smith and Jeremy Kirwan-Ward

Wall works

Until 31 January 2010

The wall works by local artists Helen Smith and Jeremy Kirwan-Ward, on view in the rest area between the two ground floor galleries, are proving to be very popular with visitors.

With these two works, the artists have created a transformative architectural intervention that looks back to the past but embraces the present. Nostalgia, romance and beauty lie in the designs of the chosen wallpapers that are punctuated by cut-outs and hard-edged painting. One wall work is sombre and nocturnal, the other is light and open, both alluding to another time and place. The name of the paper design is incorporated in both titles *Black manor house* and *White orchid - railroad*, together with the horizontal method of hanging wallpaper known as railroading.



Helen Smith & Jeremy Kirwan-Ward

White orchid - railroad [detail] 2009

Wallpaper and synthetic polymer paint

359.0 x 580.0cm

right

Jenny Watson

18 1992

oil, sequins and metal collage on canvas
191.8 x 289.8cm

State Art Collection,
Art Gallery of Western Australia

Purchased 1993

© Jenny Watson 1992



WONDERLUST

Self-Guided Tours

The Gallery has produced a range of free brochures to assist you in your own self-guided and self-paced tour of the State Art Collection, according to your interests and mood.

People Watching

A quick guide to some folks to cast a salacious or coolly-regarding eye over.

Bad Hair Day

You think you've got it bad? Erase your own suffering by checking out some people with serious problems.

Only Got 5 Minutes?

Okay you made it, but by god you're in a rush! DON'T PANIC. We can get you through in no time.

Pick Me Up

Looking for inspiration? Then follow us.

Eye Tunes

Galleries as silent places of contemplation? We think not. These works are coming through loud and clear. Turn up the volume and get those dancing shoes on, 'cause we gotta get this party started.

Local Produce

Here's some home-grown, non-genetically modified goodness to fill your artistic shopping cart.

Wonderlust Water Walk

Proudly supported by the Water Corporation

Take a journey through your Collection and discover the importance of water and how we can all play a role in protecting and conserving this precious resource.



ART BAR

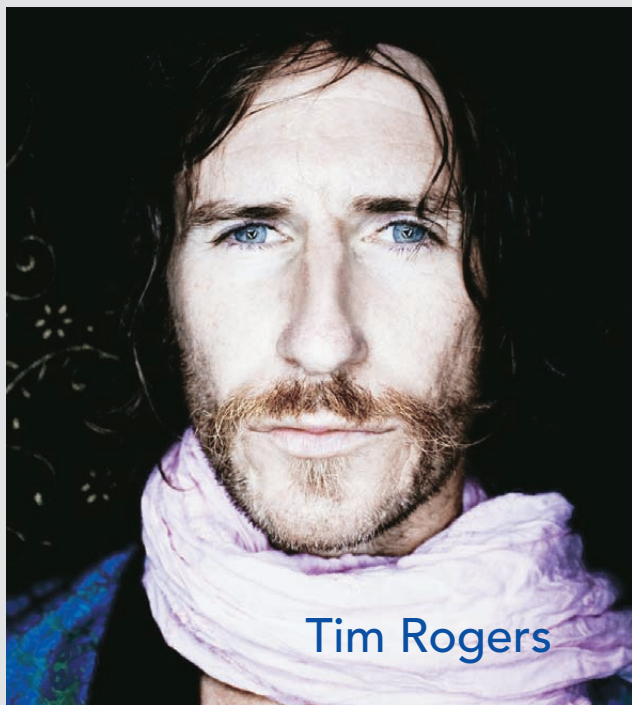


Katie
Noonan



Looking for something a little different to do at night in Perth?

Check out **ARTBAR** - the new after-dark season of events inside the Art Gallery of Western Australia where music, comedy, food, wine and beer, not to mention stunning art, come together.



Thursday 20 August

Tim Rogers

Critically acclaimed ARIA award winning artist, Tim Rogers in an exclusive acoustic ARTBAR performance.

Thursday 17 September

Katie Noonan

The final ARTBAR for Season one presents multi-award winning and multi-platinum selling Australian songstress, Katie Noonan. Joined by jazz guitarist Stephen Magnusson, and saxophonist Zac Hurren, the trio Elixir will perform a selection of their songs plus songs from Katie's album "Skin" and her new release "Blackbird".

Previous events at ARTBAR have sold out prior to the performance so purchase your tickets early.

Visit: www.bocsticketing.com.au
or call 9484 1133 today.

Doors open 6.30pm.

Food & wine available for purchase.

These are 18+ events.

For more information visit:

artgallery.wa.gov.au/ArtBar

Family Day

Sunday 11 October 10am-12.30pm

FREE

Join us to celebrate Barbie's 50th birthday!

A day filled with free fun and entertainment for the whole family. Come dressed up as your favourite Barbie if you wish. Children can get hands-on in the art-making activities, learn the amazing art of ice-sculpting, and see and participate in dance performances. You also can have your face painted, take the Water Corporation Water Walk, see vintage Barbie dolls and listen to story tellers.

Neil Taylor Collection.



Activities can be subject to change.

Check our website for details: artgallery.wa.gov.au



Fred Williams

Mt Jellore 1957

oil on composition board

60 x 84.5cm

State Art Collection, Art Gallery of Western Australia

Purchased 2008

© Estate of Fred Williams

Planned gift makes an iconic purchase possible

A planned gift by the late Sir Claude Hotchin has had a notable impact on the State Art Collection, enabling the acquisition of 183 important Australian works of art. The most recent is the major historical work *Mt Jellore* by Fred Williams.

Fred Williams, an Australian painter of great significance, was one of the most important proponents of landscape painting in Australia in the twentieth century. Curator of Historical Painting Sculpture and Design, Melissa Harpley, believes that, "The exploratory nature of *Mt Jellore* is what makes it so significant to the State Art Collection. By acquiring this work which Williams made soon after his return to Australia from study in England, we can make interesting connections with early investigative works by other Australian artists influenced by European modernism in the Collection, such as Howard Taylor, John Brack and Guy Grey Smith."

The Gallery has a long history of acquiring important works for the State Art Collection through funds that have been bequeathed. The Foundation is honoured to recognise the late Sir Claude Hotchin as a Vice Patron. His generous contribution is benefiting the Western Australian community and will continue to do so for many generations to come.

If you would like to learn more about the Foundation please contact

Lyn-Marie Hegarty, Development Director on 9492 6760 or

email: lyn-marie.hegarty@artgallery.wa.gov.au

or Teresa Pizzata, Foundation Manager on 9492 6761 or

email: teresa.pizzata@artgallery.wa.gov.au

School Holiday Activities 2009

Saturday 4 – Sunday 12 July
NAIDOC Week Celebrations

NAIDOC Children's Discovery Art Trail

10am-4.30pm daily
Gold coin donation.
Discover new works and surprises from the Indigenous Collection. Enter the prize draw to win a fabulous pack of art supplies. The Art Trail continues for the duration of the holidays.

Monday 6 July – Friday 17 July

Children's Art Activity

weekdays only (excludes Tuesdays), 10am-12noon
Gold coin donation.

Look at the world through the eyes of an eagle!

Display your creative skills using Gallery artworks as inspiration.



Saturday 26 September – Sunday 11 October
September School Holidays

Children's Discovery Art Trail

10am-4.30pm daily
Gold coin donation.
Help us celebrate Barbie's 50th birthday. Discover new works and surprises in the State Art Collection. See a display of vintage Barbie Dolls. Enter the prize draw to win a fabulous pack of art supplies. The Art Trail continues for the duration of the holidays.

Monday 28 September - Friday 9 October

Children's Art Activity

weekdays only (excludes Tuesdays), 10am-12noon
Gold coin donation.
Display your creative skills using Gallery artworks as inspiration.

City Playground Pass

Pick up your free City Playground Pass from the Art Gallery Reception for a range of fantastic activity ideas and discount offers which can be used throughout the City of Perth during the holidays.

The Art Trail is suitable for primary school aged children. No booking is required. Parents/carers must supervise their children at all times. Activities can be subject to change, check our website for details: artgallery.wa.gov.au

Education Program Highlights

Terms 2 & 3

Monday 17 – Friday 21 August 2009

Science Week: The Science of Art

Experiment with the science of art in our fascinating behind-the-scenes tours of our Conservation Labs as well as guided tours of the State Art Collection, with a specific focus on the physics, chemistry, biology and psychology behind our artworks and Gallery spaces.

Thursday 27 August, 4pm-6pm

Inside the Triangle: Focus on WA History

Teacher Professional Learning Session.

Attention all primary teachers of Society and the Environment! The Art Gallery of Western Australia along with The State Library of WA and The Western Australian Museum are working together to present an insightful program that showcases these three venues. Teachers will discover the opportunities that excursions can offer in regards to creative curriculum links.

Saturday 22 – Wednesday 26 August 2009

Children's Book Week: Book Safari

Targeting primary school students with a love of imagery and the written word, these workshops offer students an opportunity to learn about how storybooks are made. Beginning at the State Library of WA and followed by a guided tour at the Art Gallery of Western Australia, students will explore how the elements of art can be used to tell a story.

Bookings for all school programs are essential.

Call: 9492 6644 or

email: educate@artgallery.wa.gov.au

Roy Wiggan

Flashing lighthouse. Cape Levique (Ilma – Ceremonial emblem) 1993

wood, paint, wool, cotton

107 x 32.5cm (irregular)

State Art Collection, Art Gallery of Western Australia

Purchased 1993

© Roy Wiggan 1993



Wesfarmers Arts Walk-in Tours

Generously guided by Volunteer Gallery Guides

JULY

NAIDOC Week

Monday 6 – Friday 10 July at 12noon

Selected works from the Indigenous Collection

Monday 6, 13, 20, 27 at 11am & 1pm

A touch of red

Wednesday 1, 8, 15, 22, 29 at 11am & 1pm

Artist in Focus David Walker

Thursday 2, 9, 16, 23, 30 at 11am & 1pm

Faces and feelings

Friday Focus 3, 10, 17, 24, 31 at 12.30pm

'Savoy' vase by Alto Alvar

Friday 3, 10, 17, 24, 31 at 2pm

Did they use a brush?

Saturday 4, 11, 18, 25 at 1pm

General tour of your Collection

Sunday 5, 12, 19, 26 at 11am & 1pm

Artist in Focus David Walker

AUGUST

Monday 3, 10, 17, 24, 31 at 11am & 1pm

There was a time when.....

Wednesday 5, 12, 19, 26 at 11am & 1pm

These paintings are yours – Enjoy!

Thursday 6, 13, 20, 27 at 11am & 1pm

Are the blues cool?

Friday Focus 7, 14, 21, 28 at 12.30pm

Christ in the wilderness by Stanley Spencer

Friday 7, 14, 21, 28 at 2pm

The eyes of the artist tell a story

Saturday 1, 8, 15, 22, 29 at 1pm

Your Collection unveiled

Sunday 2, 9, 16, 23, 30 at 11am & 1pm

A selection of Indigenous artworks

SEPTEMBER

Monday 7, 14, 21, 28 at 11am & 1pm

Understanding the world we inhabit - Mapping

Wednesday 2, 9, 16, 23, 30 at 11am & 1pm

Artist in Focus David Walker

Thursday 3, 10, 17, 24 at 11am & 1pm

Light & Line in Art - Material Gesture

Friday Focus 4, 11, 18, 25 at 12.30pm

Adam by Rodin

SEPTEMBER continued

Friday 4, 11, 18, 25 at 2pm

Abstract Earth: The Photography of Richard Woldendorp

Saturday 5, 12, 19, 26 at 1pm

A tour of your Gallery

Sunday 6, 13, 20, 27 at 11am & 1pm

WA Indigenous Art Awards

OCTOBER

Seniors Week Tour

Monday 26 – Friday 30 at 12noon

Memories of years gone by

Monday 5, 12, 19, 26 at 11am & 1pm

WA Indigenous Art Awards

Wednesday 7, 14, 21, 28 at 11am & 1pm

Feeling your sense of place - Home

Thursday 1, 8, 15, 22, 29 at 11am & 1pm

Human form in a narrative - Story

Friday Focus 2, 9, 16, 23, 30 at 12.30pm

Tea with Kathleen O'Connor

Friday 2, 9, 16, 23, 30 at 2pm

Abstract Earth: The Photography of Richard Woldendorp

Saturday 3, 10, 17, 24, 31 at 1pm

A tour of your Gallery

Sunday 4, 11, 18, 25 at 11am & 1pm

Strength and survival explored - Presence

* Advertised tours may be subject to change, we apologise for any inconvenience.



Arthur Streeton

The hillside 1895

oil on panel

23.3 x 27.3cm

State Art Collection, Art Gallery of Western Australia

Purchased with funds from the

Geoffrey William Robinson Bequest Fund, 1990



Have Your Function at One of Perth's Most Remarkable Venues

The Art Gallery of Western Australia offers itself as one of Perth's most impressive venues that can be utilised for meetings, theatre presentations, product launches, exclusive cocktail parties, formal dinners and special events.

Functions can be combined with exclusive private tours of world-class exhibitions, creating a unique and lasting experience for your guests.

For further enquiries please contact the Gallery's Events Co-ordinator on 9492 6771 or email: functions@artgallery.wa.gov.au



Art Gallery
of Western Australia
Shop

OCTOBER SALE

up to

50% OFF Selected items

1-31 October

Calendar

JULY

**School Holiday Fun and
NAIDOC Week Celebrations**

4 July – 19 July

THING beware the material world

Until 5 July

Year 12 Perspectives 2008

Until 19 July

**Western Australian
Indigenous Art Awards 2009**

25 July – 15 November

AUGUST

Abstract Earth:

**The Photography of
Richard Woldendorp**

1 August – 8 November

SEPTEMBER

**School Holiday Fun and
Barbie Doll Display**

26 September – 11 October

OCTOBER

Mari Funaki, works 1992 - 2009

Until 18 October

David Walker:

Anatomy of the object

Until 18 October

DECEMBER

McCubbin:

Last Impressions 1907 - 17

12 December – 28 March 2010

A National Gallery of Australia Travelling Exhibition

Frederick McCubbin

Self portrait 1916

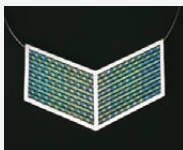
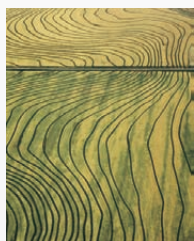
oil on canvas

50.3 x 35cm

State Art Collection, Art Gallery of Western Australia

Purchased with funds from the Great Australian

Paintings Appeal, 1981



Art Gallery of Western Australia

Perth Cultural Centre, Perth WA

Postal address: PO Box 8363, Perth Business Centre,
Perth WA 6849

Telephone: +61 8 9492 6600 Facsimile: +61 8 9492 6655

Email: admin@artgallery.wa.gov.au

Web: artgallery.wa.gov.au

Infoline: +61 8 9492 6622

Opening hours

10am-5pm Closed Tuesdays

Admission to the Gallery is free although donations are encouraged. An entry charge may apply to special exhibitions.

Education / bookings

Telephone: +61 8 9492 6644 Facsimile: +61 8 9492 6648

Email: educate@artgallery.wa.gov.au

Public Programs / bookings

Telephone: +61 8 9492 6640 Facsimile: +61 8 9492 6648

Email: public.programs@artgallery.wa.gov.au

Art Gallery Foundation

The Foundation provides an opportunity for private individuals and corporations to play a significant role in the development of the Art Gallery of Western Australia.

Telephone: +61 8 9492 6761 Facsimile: +61 8 9492 6767

Email: foundation@artgallery.wa.gov.au

Friends of the Art Gallery

Membership enables closer involvement with the Gallery.

Telephone: +61 8 9492 6750 Facsimile: +61 8 9492 6755

Email: friends@artgallery.wa.gov.au

The Gallery Shop

A fabulous range of items including gifts and jewellery and an extensive selection of products for children.

Telephone: +61 8 9492 6712 Facsimile: +61 8 9492 6717

E-mail: shop@artgallery.wa.gov.au

Caffissimo at the Gallery

Take a break from your visit to the Gallery and enjoy a morning coffee, lunch or afternoon tea. Licensed Café.

Special offers available for Friends and Foundation members.

Ask in the Friends/Foundation offices for details.

Telephone: +61 8 9228 3100

Regional Galleries

Geraldton Regional Art Gallery

24 Chapman Road, Geraldton WA 6530

Telephone: +61 8 9964 7170/7180

Email: grag@artgallery.wa.gov.au

Web: www.cgg.wa.gov.au/artgallery

Bunbury Regional Art Galleries

64 Wittenuom Street, Bunbury WA 6230

Telephone: +61 8 9721 8616

Email: mail@brag.org.au

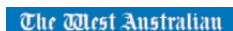
Web: www.brag.org.au

Art Gallery of Western Australia TomorrowFund Lead Donors



Sponsors

Annual Sponsors



Year 12 Perspectives 2008



Department of
Education and Training



Government of Western Australia
Curriculum Council



Water Walk



Online Collection



ARTBAR Event Sponsors



CITY of PERTH WINTER ARTS SEASON

The Art Gallery of Western Australia is proud to be a partner of the City of Perth Winter Arts Season

Richard Woldendorp

Coastal river pattern, Northern Territory, Australia 2004

Lambda digital print

100 x 75cm

© Richard Woldendorp

[Cover Image]

Location



This is the Gallery's Preview publication which contains all the latest information on exhibitions, events and public tours. If you would like to receive it by email, together with our electronic newsletter, please log on to artgallery.wa.gov.au/subscribe If you are already a subscriber please be sure to update any change of contact details.